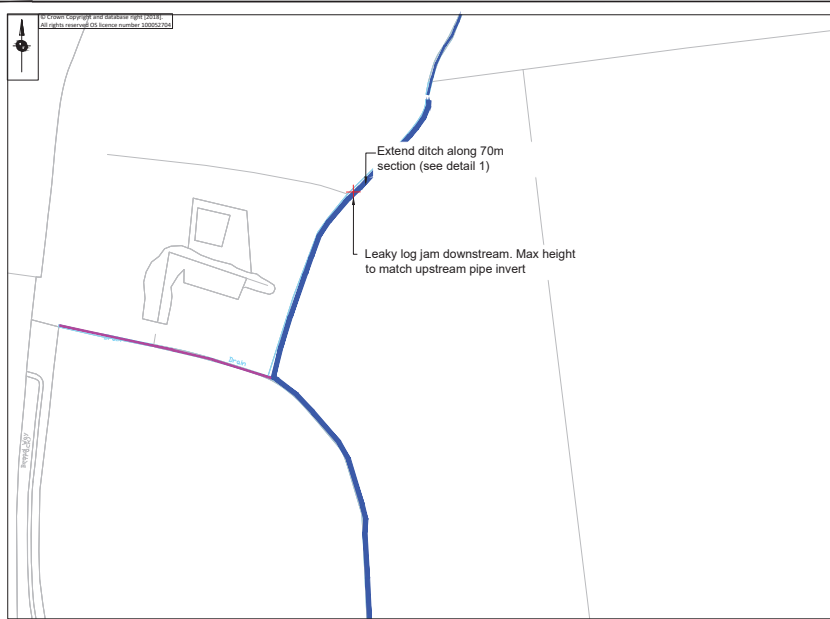


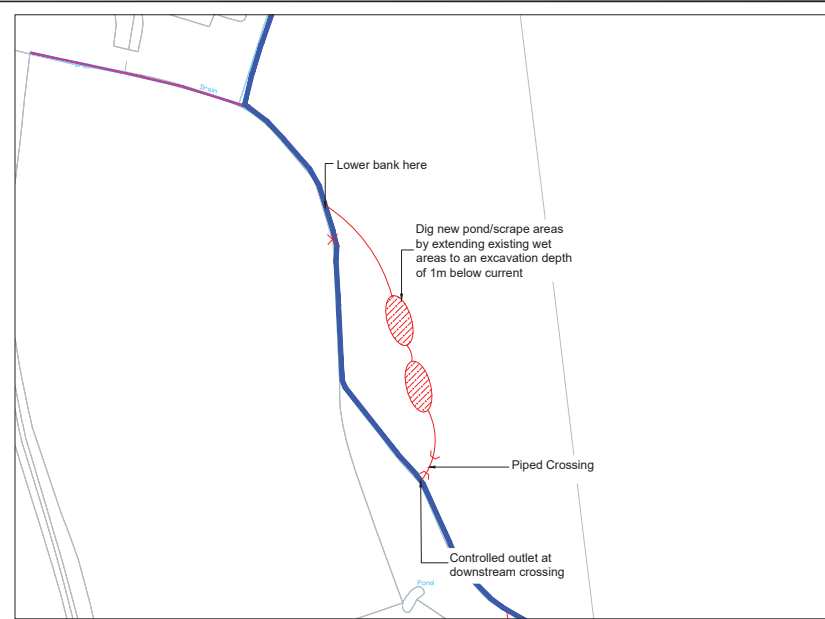
Key:

	IDB Main Drain
	Other Watercourse
	Leaky Log Jam

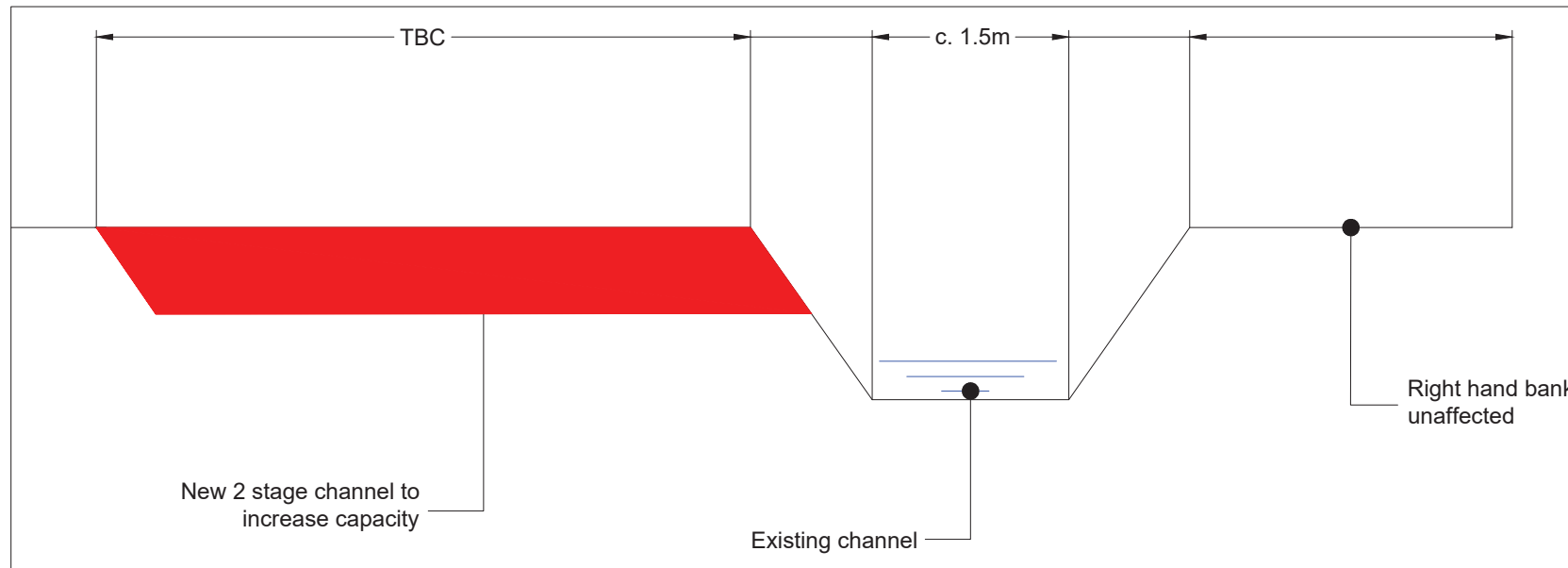
- Notes:
1. No dimensions to be scaled from this drawing
 2. Drawing for consultation only. NOT to be constructed from or used for tender purposes
 3. Approximate water storage of option A is 230m³ (assuming 5m two-stage channel width)
 4. Approximate water storage of option B is 1010m³



Plan View: Two-Stage Channel (Option A)
Scale 1: 2500



Plan View: Storage Ponds (Option B)
Scale 1: 2500



Detail 1: Two-Stage Channel (Option A)
Scale 1: 25

**FOR
CONSULTATION**

Rev	By	Chkd	Issued	Date	Description

Project: SHIMPLING NATURAL FLOOD
MANAGEMENT (NFM)
PROJECT

Drawing:

**UPSTREAM (EAST)
2-STAGE CHANNEL
(A) / PONDS (B)**

Drawn by: L.HALL	Date: 12/04/2022
Checked by: M.PHLPOT	Date: 14/04/2022
Approved by: M.PHLPOT	Date: 14/04/2022
Drawing No: SHIMP/2022/200/005	Revision: 0
Drawing Scale: AS LABELLED @ A2	